

P7000 LINE MATRIX PRINTERS



P7000 LINE MATRIX PRINTERS

*leadership
by design*



PRINTRONIX®
GLOBAL PRINTING...ENABLED.

PRINTRONIX®

LINE MATRIX PLATFORM

leadership by design

Printronix has been the global leader in industrial printing solutions for over 30 years, earning a reputation for designing and manufacturing leading edge products and delivering them to market with unsurpassed service and support.

The Printronix P7000™ Line Matrix Printing Platform extends the series of technology innovations that cement Printronix leadership position. Line matrix printing is Printronix flagship technology, and it remains the workhorse solution for supply-chain and back-office printing applications because of its reliability, lower cost of ownership and flexibility of printing applications.

SCALABLE • INNOVATIVE • BEST OF BREED • BUILT FOR CHANGE

SCALABLE

Designed to meet your printing demands today and adapt to match your future printing requirements. Your investment will be protected with Printronix upgrades to support emerging standards and innovations.

INNOVATIVE

Printronix invented line matrix printing and maintains a reputation as a technology leader in the printing industry, with innovative solutions to real-world challenges.

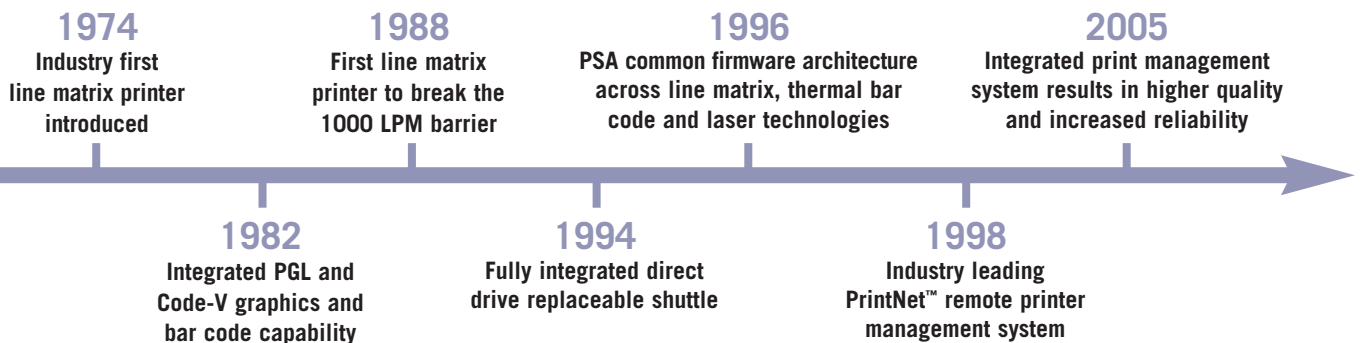
BEST OF BREED

Printronix line matrix printers set the standard in the industry. The P7000 line matrix platform features the lowest service cost, least expensive cost per printed page, easiest user experience and longest-lasting ribbon available.

BUILT FOR CHANGE

By design, this framework has produced the best line matrix printer in Printronix history. The P7000 platform is even more reliable, and is future-proof. Because of its scalability, the P7000 could be the longest-lasting printer any organization will ever own.

Printronix pioneers three decades of leadership by design





RUGGED, COST EFFECTIVE AND VERSATILE

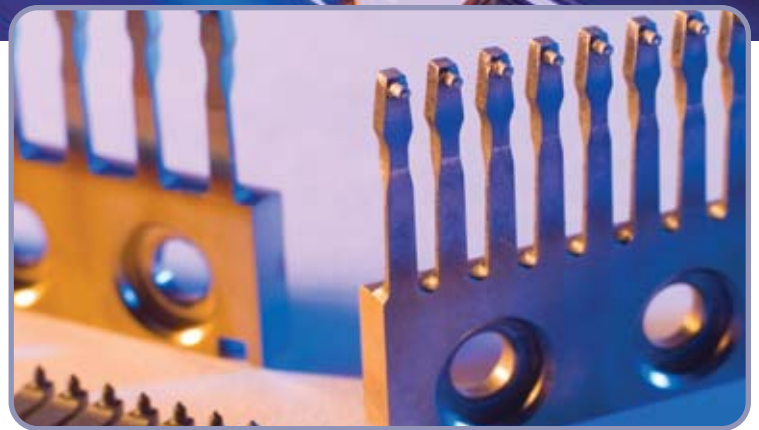
The P7000 offers unsurpassed reliability. When your application cannot be interrupted, look to the P7000 for maximum productivity.

For cost control, this technology provides the edge needed, giving you the lowest cost per page output.

It handles specialized forms that work for your application – forms that can only be printed on a line matrix printer – information reports, multi-part transaction documents and bar code labels.

P7000 FAMILY INTRODUCES

- **Enhanced reliability** – provides more up time and lower operating costs
- **Ultra Capacity ribbons** – delivers darker image, lasts longer, and costs less
- **Integrated print management system** – provides precise control over print quality, print costs, and job planning
- **Redesigned pedestal** – improves user access and forms handling flexibility
- **Increased ease of use** – simplifies operation and enhances productivity



ENHANCED RELIABILITY

No other print technology delivers more trouble free high volume printing than a Printronix line matrix printer. Every generation of our printers has delivered higher quality and more reliability than its predecessor. Now the P7000 family, with a wide range of design enhancements, carries the tradition forward delivering the most reliable Printronix printer ever. The result is more uptime, more mission critical dependability, and lower service and operating costs.



New formulation and larger capacity spool delivers higher performance and lower cost

ULTRA CAPACITY RIBBONS*

Leadership by design also extends to our consumables. Customers turn to line matrix to get the lowest cost printing of any technology. Typically **10 times less expensive than laser or serial matrix**, Printronix line matrix delivers significant cost savings in all high volume applications. To extend this benefit even further, Printronix has made significant investments in the design and testing of new fabrics, ink formulations, and ribbon construction. The highlight of these investments is a totally new ribbon that is at the heart of the P7000 family. Suitable for both text and bar code applications, the new P7000 Ultra Capacity ribbon starts 20% darker and lasts **3X longer** than our most popular 30 million character ribbons. With a 90 million character rated life, the number of user interventions are dramatically reduced. In addition to the labor savings from reduced consumable handling, the efficiency of this new design results in an even **lower cost per page**.



Plan print jobs with precise ribbon life indicated on panel

INTEGRATED PRINT MANAGEMENT SYSTEM

This system is designed to constantly monitor print quality - eliminating waste, maximizing ribbon life and reducing printing costs. Printronix has built in the intelligence and auto-sensing capabilities that provide visibility and control without any user set-up.

This allows the system administrator to have precise control over print quality, consumable costs, and job planning. Add in PrintNet® Enterprise and the visibility and control, along with instant e-mail alerts, comes right to your desktop - ideal for enterprise management of printing applications.

* Patent Pending



IMPROVED PEDESTAL DESIGN

The pedestal model has been completely redesigned for the P7000 line.

- The all new clamshell design allows easy access to all controls, providing faster ribbon replacements and easier paper loading
- Interior room has been expanded to accommodate the P7000 Ultra Capacity ribbons, creating a 3X increase in ribbon capacity over previous pedestal models
- Standard oversized casters make movement easier than ever
- Versatility has also been enhanced with the ability for the paper path to be configured for either top or rear exit
- Using the top paper exit along with newly refined eject key functionality this printer is ideal for short print runs and easy access to output



Rear feed



Top feed



New clamshell design

ENCLOSED CABINET

The enclosed cabinet models provide for near silent operation, making these printers perfectly suitable for use in the quietest of office environments. In addition, these models provide the best paper handling for large print runs. All input paper is sealed inside and protected from bumping and contamination. Even more importantly, an elegantly simple, but highly effective combination of moveable fences and chains allows for neat stacking all the way up to a full box of paper. For tougher forms that tend not to re-fold well, a SureStak power stacker option is available for the enclosed cabinet models. With this option, even the toughest forms can be printed and stacked neatly up to a full box. So, in either configuration, the enclosed cabinet models are your best choice for large unattended production printing applications.



New enclosed cabinet design

INCREASED EASE OF USE

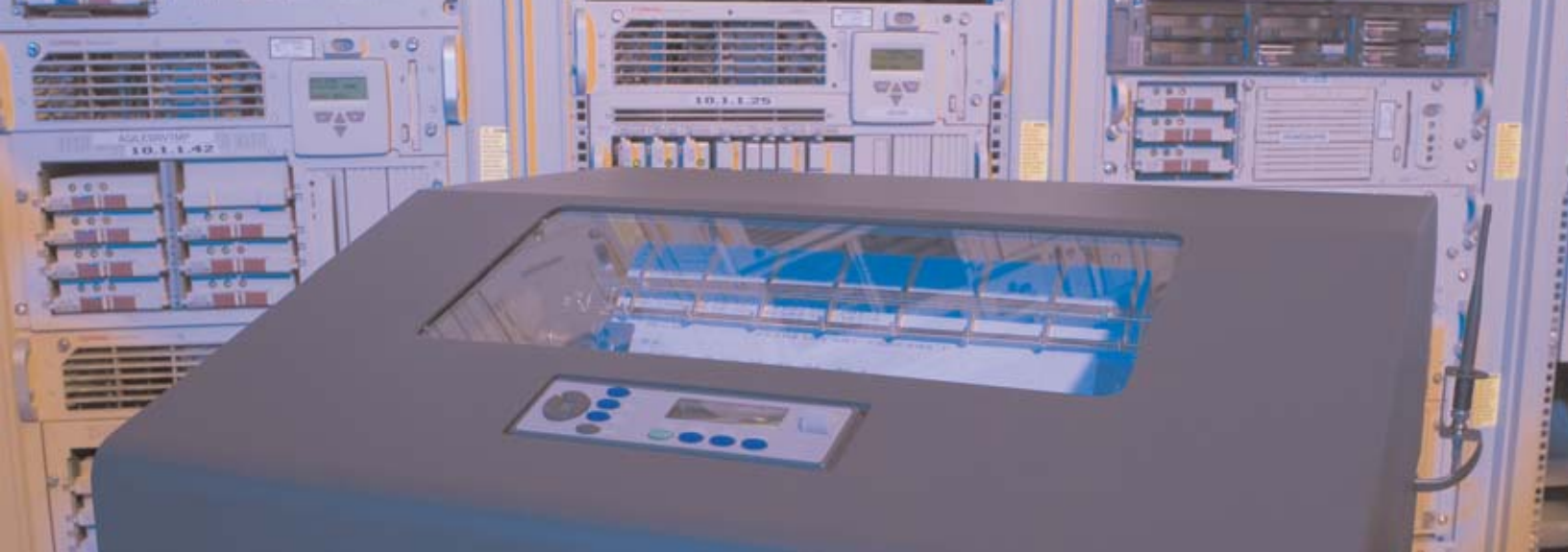
In creating the next generation of line printers, customer feedback was used to identify enhancements that would simplify operation, enhance the user experience and boost productivity.

- The ribbon spool and hub have been redesigned to be fully self aligning and to snap on and off with ease
- All user adjustment and control points are blue for fast operator identification
- The control panel is color coded, with faster reacting keys
- A Quick Setup menu simplifies and groups the most common setup parameters into one easily modified section
- Automatic configuration saving prevents settings from accidentally being lost or reset
- A new platen gap adjustment system separates the functions of opening/closing the platen and setting the gap. Now, the gap is set by a knob to match the form's characteristics, and once set, the platen can be opened and closed without affecting the gap setting, simplifying the loading of ribbons and forms



New platen adjustment feature





ASSET PROTECTION

Today's IT environment is changing faster than ever and it is impossible to tell what is going to be required of your IT assets in the future. This is why a new PSA®3 controller with expanded memory and capabilities was developed especially for the P7000. Just as the P5000 was able to grow with a changing IT environment for nine fast-paced years, the P7000's new PSA3 controller provides all the base foundation and necessary room to grow with the next generation of changes. So, whether your needs evolve to new data streams or expanded wireless options, your investment will be protected with the P7000.

CONNECTIVITY AND COMPATIBILITY

The P7000 provides the most connectivity and emulation options available on any impact printer. Mix and match between wired Ethernet, wireless Ethernet, parallel, serial, Coax and Twinax. Couple this flexibility with automatic port switching and you can easily connect your new line matrix printer to multiple systems. Often this is an ideal solution for environments migrating between hosts. Available emulations include P-Series, PGL, VGL (Code-V), DEC LG, PCL 2, ANSI, IPDS, CT, and the most common serial matrix languages. What is most important about all of these emulations and connectivity options is seamless compatibility. By design and through rigorous testing, the P7000 is able to seamlessly replace any previous Printronix line matrix printer and virtually any competing legacy impact product.

FLEXIBLE AND ADAPTABLE

Understanding that often a simple modification to the application is just not possible, all P7000 printers come standard with the ability to intercept and modify a data stream before printing. Any changes can be corrected or modified to create the desired output without any costly host application modification.

ETHERNET WITH JOB CONTROL

There is a large installed base of coax and twinax connected line printers. Traditionally, migrating away from Twinax or coax to Ethernet eliminated the costly and inflexible infrastructure, but also eliminated the valuable job control. Now, with TN3270, TN5250, or the latest IPDS, the choice between cost/flexibility and control is eliminated. Using these new options, you can migrate to Ethernet printing and still maintain all the job control these mission critical applications require.

PRINTNET ENTERPRISE

Successful organizations are flexible enough to meet new requirements in a changing marketplace. PrintNet Enterprise provides this flexibility by placing total control of worldwide print operations in your IT network manager's hands. By combining a fully integrated Ethernet adapter and Java-based remote management software, this remote printer management tool provides:



- **Increased IT resource efficiency** – Centrally manage, organize and control Printronix printers remotely on a LAN/WAN and remotely control, configure, manage and monitor printers over the network
- **Reduced downtime costs** – Maximize printer uptime by instant response to printer issues from email, pager or cell phone alerts
- **Maximized security** – Utilize PrintNet Enterprise remote front panel emulation to change, secure and protect printer configurations by locking out unauthorized users
- **Complete compatibility** – Designed for upward compatibility to support and manage the entire Printronix family of future printers in a fast expanding network. These printers are fully compatible with existing Printronix line matrix, thermal bar code and fanfold printing solutions that frequently operate in the same enterprise network.

PRINTER MODELS	P7205 P7005	P7210 P7010	P7215 P7015	P7220
Print Speed (LPM, upper case characters, lower case characters)				
High Speed	500/428	1000/856	1500/1289	2000/1700
Data Processing	375/300	750/600	1125/900	1500/1200
Near Letter Quality	200/154	400/306	600/459	800/615
Graphics Speed (IPM)				
60 x 48 dpi	63	125	187	250
60 x 72 dpi	42	83	127	167
90 x 96 dpi	21	42	61	83
Paper Feed Speed (IPS)	12	20	25	38.5

PRINTING GENERAL

Print Method	Impact Line Matrix
Typefaces	High Speed, Data Processing, Near Letter Quality
Character Pitch (char. per inch)	10, 12, 13.3, 15, 17.1, 20 (except NLQ for 20 pitch)
Line Spacing (lines per inch)	6, 8, 10.3, n/72, n/216
Maximum Resolution	180 dpi Horizontal, 144 dpi Vertical
Printable Width	Up to 13.6" (345.4 mm)

COMPATIBILITY

Emulations Standard	Printronix P-Series, P Series XQ, Serial Matrix, IBM ProPrinter III XL, Epson FX-1050
Emulations Optional	PGL/VGL, ANSI 3.64, IPDS (Twinax and Ethernet), TN5250, TN3270, PCL 2, DEC LG, Twinax and Coax. Twinax - IBM 5225 Models 1, 2, 3, 4, IBM 4234 Model 2, 12, Printronix transparent mode available for special functions. Coax - IBM 3287 Models 1 and 2, IBM 4234 Model 1, Supported modes BSC, SCS/LU1, DSC, and DSE. Printronix transparent mode available for special functions.
Dynamic Font Selection	Selectable printing styling of bold, italic, double wide, double high, overstrike, underline, subscript and superscript. Provides a large combination of character fonts.
Resident Character Sets	Unicode UTF-8 and over 100 multinational sets including IBM World Trade, ECMA Latin 1, DEC Multinational, IBM Code Page 437 and 850, OCR A, OCR B
Fonts	NLQ Serif, NLQ Sans Serif, Data Processing, High Speed, OCR A, OCR B
Resident Bar Codes	30 resident symbologies, including Code 39, EAN 8/13, UPC A/E, Postnet, Royal Mail, Interleaved 2 of 5, and PDF 417

FORMS HANDLING

Type	Continuous, fan folded, edge-perforation
Width	3" to 17"
Copies	Up to 6 parts
Weight	15 to 100 lbs. up to 0.025" thickness
Paper Path	Straight through paper path with easy-load dual adjustable tractors
Feed	Bottom feed
Forms Control	14 and 12 channel electronic vertical format unit, paper-out detector and alarm, paper motion detector and alarm

PRINTER SOFTWARE AND DRIVERS

Printronix PrintNet Enterprise remote management software
 SAP Device Types
 Windows 95/98/NT/2000/XP

PRINTER FEATURES

Standard	Integrated print management automatic ribbon life monitor
Optional	SureStak on P7210, P7215 and P7220
Optional	Extended doors for 14" & 17" forms support
Optional	Black back forms paper out sensor
Optional	Slide out paper tray for easy loading & unloading

GENUINE PRINTRONIX RIBBONS

Ultra Capacity	Darkest longest lasting ribbon for bar code, OCR and text applications – 90 million character capacity
Label	For applications using shiny or coated label face stocks – 65 million character capacity

INTERFACES

Serial	RS-232 (RS-422 optional)
Parallel	IEEE-1284/Centronics (standard) Data Products (optional)
Ethernet	PrintNet Enterprise 10/100 Base T (optional)
Wireless	Ethernet 802.11b (optional) Wireless Compatible Radios (not included) Lucent™ (Proxim) Orinoco Gold Cisco™ AIR-LMC352 (MMCX connectors)
Twinax	Integrated Twinax interface for attachment to IBM Systems 36/38 and AS/400 directly or via IBM 5394 or 5494 workstation controller (optional)
Coax	Integrated coax interface for attachment to IBM 3174, 3274, or 3276 cluster controller (optional)
Auto Switching	Between active ports

POWER

	P7205 P7005	P7210 P7010	P7215 P7015	P7220
Watts Typical	175	260	390	475
Line (+/- 10%)	Auto Ranging 100-120 VAC, 200-240 VAC, 50/60 Hz			
Compliance	Energy Star - Less than 28 watts (energy saving mode)			

DIMENSIONS

	Pedestal	Cabinet	With SureStak
Height	36" (914mm)	42.5" (1080mm)	42.5" (1080mm)
Width	25.3" (640mm)	27.0" (686mm)	27.0" (686mm)
Depth	21.2" (538mm)	29.0" (737mm)	33.75" (857mm)
Shipping Weight	148 lbs. (77.2kg)	285lbs. (129.3kg)	305lbs. (138.5kg)

ENVIRONMENTAL

Acoustic Noise (per ISO 7779)	P7005 – 62 dBA P7010 – 65 dBA P7015 – 68 dBA	P7205 – 50 dBA P7210 – 50 dBA P7215 – 52 dBA P7220 – 55 dBA
Operating Temperature	50° to 104° F 10° to 40° C	

© 2005 Printronix, Inc. All rights reserved. Printronix, ThermoLine, PrintNet, PSA, LaserLine, PGL, IGP, T5000[®], T5000[™], SmartLine, RFID Smart, SDLK, SLP, SLPP, SLPA, ODV, ODV Data Manager, SMT, 5[™], SL5000[®], SL5000[™] are trademarks or registered trademarks of Printronix, Inc. All other trademarks, product names, and company names or logos herein, are the property of their respective owners. Printronix, Inc. utilizes "green" packaging for optimal recycling. Product appearance and/or specifications are subject to change without notice. PTX-156 (6/05)