



"Dexterity WMS has proved an invaluable investment, providing flexibility and efficiencies in our warehousing operation. The staff at Barcode-IT have always shown themselves to be dedicated to providing excellent service and we are delighted at the results they have achieved."

Ian MacDonald, IT Manager at Endon Lighting Ltd.

Next Issue...



We review how mobile printers can be linked into Dexterity WMS for Sage 200 for producing customer specific labels.

Dexterity WMS

System Features:

- Goods Receiving
- Intelligent Putaway
- Stock Moves
- Stocktaking
- Cycle Counts & Perpetual Inventory
- QC & Quarantine
- Pallet Management
- Batch/Lot Control
- FIFO Stock Control
- Kitting & Bill of Materials
- Expiry Dates
- Best Before Dates
- Serial No. Management
- Pallet & Container Management
- Order Management
- Single Order Picking
- Cluster / Wave Picking
- Route / Run Picking
- Optimised Pick Routes
- Cross Docking
- Despatch Control
- Compliance Labelling
- Documentation
- Despatch Notes
- Shipment Manifests
- Dashboard & KPI's

Management & Sales

- Real Time Logistics
- Increased efficiency
- Customer satisfaction
- Achieve more with less

Warehouse & Transport Manager

- Assign & manage tasks
- Single order pick
- Bulk & cluster order picking
- Pick to delivery route

Dexterity WMS - New Data Terminals

Barcode-IT have introduced a new range of data terminals to enhance Dexterity WMS for Sage 200. The new terminals have powerful new WiFi radios, ultra long life batteries and the latest in barcode scanners. The new terminals are called Dex-S1 and Dex-K1 and both terminals offer rugged performance for the warehouse.

The Dex-S1 is designed for fast paced operations where workers are doing a large number of transactions either on foot or using a man-rider. It has the unique feature of providing a "green spot" "good read" indicator shining directly onto the barcode, in addition to the loud beep. The Dex-S1 is small and light and comes with a large high visibility colour graphic display with touch screen to improve use productivity.



Dex-S1

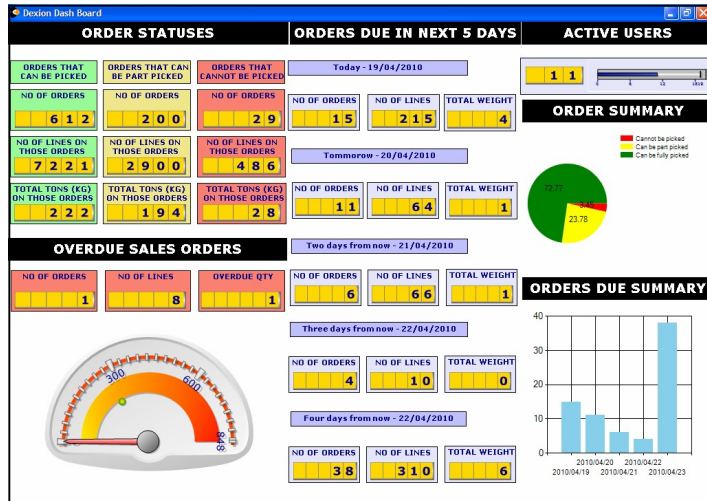


Dex-K1

The larger Dex-K1 is more suited to a warehouse where the operators uses a fork truck in addition to foot duties and may need to scan barcodes on pallets from a distance or when pallets stacked two or more high. The Dex-K1 has a powerful auto ranging, laser barcode scanner that can read both large and small bar-codes, near and far way, which makes it perfect for scanning barcodes, without having to leave the fork truck.

Either terminal can be supplied but Barcode-IT recommend the Dex-S1 as the standard for most warehouses, as it has been designed to match the features that most warehouse workers need in day to day operations.

Dexterity Dashboards & KPIs



Dexterity Dashboard: A snapshot of the entire operation at a glance.

Dexterity Reseller Program

Our philosophy is to sell our Dexterity solutions through Sage Business Partners. We prefer to work with Sage Business Partners, who deal with and manage the Sage 200 installation and business management needs of their customer.

Share in the joint success of introducing Dexterity Solutions to your customers through winning new business, commissions and reciprocal referrals.

Contact: **Jim Southern** at Barcode-IT for more details. email: jsouthern@barcode-it.co.uk or call 01200 441977.

Newsletter for Sage Business Partners

Quarterly Newsletter from Barcode-IT

September 2010

Dexterity WMS for Sage 200—Modules

Dexterity WMS for Sage 200 automates the whole Sage 200 warehouse, but once the manager sees the power and accuracy this offers, they often want additional control and so Barcode-IT have designed a range of special modules

Advanced Order Management

The Dexterity WMS Advanced Order Management module allows specific rules to be applied to the order picking process to smooth workflow, minimise travel distances for pickers and optimise picking for regular customers.

Endon Lighting, use AOM to control an order cut-off time for customers, which help guarantee next day delivery. Orders are consolidated and grouped for each customer and are picked and dispatched together to a single address.



With a defined cut off time, any orders placed before the cut off, are automatically consolidated and picked in a single run, with orders placed after the cut-off held over until the next shift. However managers can over ride the standard rule and move urgent orders to immediate pick if required.

Ian MacDonald, IT Manager at Endon, sums up the benefits as; *"No panics. No dramas. Just smooth workflow."*

In addition, the AOM can prioritise and allocate customer orders to specific pickers or spread the picking across multiple pickers for urgent or time critical orders. This gives the manager as much control as he wants, but does not require constant attention

And to add the final touch to the dispatch process, Dexterity WMS has been integrated with **FedEx Express** shipping process. This means that customer delivery information does not need to be manually input into Fed-Ex, as the correct details are electronically provided into Fed-Ex's dispatch system, guaranteeing flawless address details every time.

Contact us now:

Barcode-IT
Horrocksford Offices, Chatburn, Lancashire, BB7 4LA
tel. 01200 441977 fax. 01200 440250
e-mail. sales@barcode-it.co.uk
web. barcode-it.co.uk

Back To Back Orders

Dexterity has the capability to automate and manage Back to Back orders in Sage 200. Back to Back orders occur when sales orders cannot be fulfilled using current inventory and a purchase order has to be raised. When the product arrives, it will simply be putaway, but this action neglects to take into account the open sales order awaiting the product. Therefore the fulfilment and dispatch of the open order is left to local knowledge or the customer ringing to chase their order.

Using Dexterity's unique module, stock can be allocated to open orders as soon as it is received and the rest put into stock. This means that customer orders are fulfilled and dispatched as soon as possible and stock coming in is prioritised instead of potentially being picked for new orders. Dexterity also has the ability to de-allocate orders, in the case that they are cancelled before stock is received.



Automated Messaging

Dexterity WMS for Sage 200 can be configured to issue e-mail alerts for preset events, for example low stock and stock arrivals. This means that warehouse managers can be informed when stock is low and customers can be informed when their order has been shipped.

Automatically informing key people with instant and accurate updates of key events, removes the need for printed reports, incorrect word of mouth "guesses" and eliminates last minute panics, allowing companies to give excellent and efficient customer service.

Pick To Box / Pick To Bundle

Dexterity offers full traceability in order fulfilment through its clever "pick-to-box" function. Orders that involve a number of smaller items can be picked, put into one larger box/bundle and labelled ready for shipping with full details of the box content. If there is ever a query regarding the contents of the box, there is a full electronic trail for proof of despatch and traceability purposes.

Barcode-IT will be exhibiting Dexterity WMS for Sage 200 at Sage Visions. Find us on Stand 24 at The Concept Centre, Millbrook, Bedfordshire on Wednesday 3rd of November 2010.



sage
Visions 2010

To book your personalised demonstration call Jim Southern on 01200 441977 or e-mail jsouthern@barcode-it.co.uk